



St Helena
Government

This document has been superseded by the 2021 Census, but remains here because there are some differences in the information available from the two reports.

St Helena 2016 Population & Housing Census

Summary Report

St Helena Statistics Office



A Publication from the St Helena Statistics Office

This report outlines the high-level results from the 2016 Population and Housing Census of St Helena.

Statistical outputs are produced to high professional standards as outlined in the UN Code of Practice for Official Statistics. The Census has been conducted inline with UN Principals and Recommendations. This report is free from political influence.

This report and supplementary materials are available electronically from:
www.sainthelena.gov.sh/statistics

Contacts

Any enquiries regarding this publication should be directed to the St Helena Statistics Office.

tel: (+290) 22138

email: statistics@sainthelena.gov.sh

St Helena Statistics Office
The Castle
Jamestown
St Helena
STHL 1ZZ

Reproduction

You may re-use this information (including our lovely logo) free of charge in any format or medium. All images, tables and data are property of the St Helena Statistics Office unless otherwise stated and sourced.

Contents

Contents	1
2016 Population and Housing Census - the team who made it happen	3
Overview	4
Legal Basis.....	4
Online Census.....	4
Questionnaire Development.....	5
Census Support.....	6
Census Delivery	6
Next Steps and Further Analysis	8
Census results	9
Population Count.....	9
Population of St Helena, 1901 to 2016.....	10
Household Population and dwellings by administrative district, 2016.....	10
St Helenian Household Population and dwellings	10
Age of the St Helenian Household Population	11
Economic Activity.....	13
Self-reported Health Status and Caring Commitments	15
Access Issues.....	15
Caring Commitments.....	15
Other Person Level Information	16
Dwelling Type and Tenure	17
Dwelling Type.....	17
Tenure.....	17
Nature of Tenure	17
Funding of Home Ownership.....	18
Kitchen and Bathroom Facilities.....	19
Kitchen Facilities	19
Kitchen Sink	19
Bathroom Type.....	19
Toilet Facilities.....	19
Water and Sewerage	20
Sewer System	20
Main Water Supply	20
Piped Hot Water	20
Solar Hot Water Heater	20
Power.....	21
Main Power for lighting.....	21
Primary Cooking Fuel.....	21
Secondary Cooking Fuel	21
On-site generation of Renewable Power.....	21
Household Assets.....	22
Provisional Count of Empty Dwellings	23



**St Helena Statistics Office
The Castle
Jamestown**

June 2016

To the People of St Helena

As supervisor for the 2016 Population and Housing Census it has been my privilege to oversee and co-ordinate one of the largest statistical exercises we can contemplate on St Helena. Every household and person on St Helena has been touched by the Census; essential information has been gathered which will be used to the benefit of the Island for years to come.

A Census provides us with an accurate and complete view of the Island, the people who live here and the way that they live. The results are beyond value for policy formation, planning of services and will be used to inform decision making (both on Island and overseas) to benefit the people of St Helena for years to come. The 2016 Census has been a particularly important exercise as it is the baseline which will allow us to accurately monitor the social impacts of the forthcoming air service.

The Island population has grown with the enumerated resident population on Census night, Sunday 7 February 2016, standing at 4,534. This is an increase of 457 persons (11.2%) from 4,077 enumerated in the 2008 Census. Vital information regarding the demographics of the population has been gathered- highlighting an aging population and a continuation of the trends for young adults to leave the Island. Both of these present a considerable challenge to the future of St Helena and will be carefully monitored.

A Census is a vast and complex exercise which has relied on the hard-work and determination of a close knit team to make sure that the right Census for St Helena was developed and delivered within an extremely short time-scale, and on a very limited budget. The team have been helped by many people within the community who have participated in consultation and piloting exercises, provided advice and insight during fieldwork exercises and have been supportive in many other ways to assist the team in their work. Thanks is also due to the people of St Helena who willingly participated in the Census and completed their questionnaires quickly and accurately- your individual details will be protected and as a whole the information you have provided is beyond value in protecting the interests of the Island and supporting sustainable development.

**Dr Paula McLeod
Statistician and Census Supervisor
6 June 2016**



2016 Population and Housing Census - the team who made it happen

Census Supervisor	Paula McLeod
Assistant Census Supervisors	Kelly Clingham Justine Joshua
Technical Support/ Logistics	Gareth Drabble
Data Entry and Analytical Support	Brendan Wahler
Mapping/ Building Footprints	Murray Henry and the GIS team
Communications	Kerisha Stevens Kimberley Yon-Roberts
IT Support	David George
HR Support	Jackie Moyce
Development of online platform	Matthew Seymour, <i>Simbahosting</i>
Enumerators:	
Sandy Bay	Andrew Constantine Elizabeth Knipe
Blue Hill	Gillian Stroud Sandra Williams
St Paul's	Julia Benjamin Sara Benjamin Priscilla McDaniel Natasha Stevens Ashton Yon Craig Williams Juliet Williams
Half Tree Hollow	Delia Du Preez Isha Harris Nikita O'Bey <i>Kelly Clingham</i> <i>Justine Joshua</i>
Jamestown	Ellen-Rose Piek Leigh Richards Carolyn Richards Marian Yon
Alarm Forest	Tracey Buckley Sharon Henry
Levelwood	Angela Francis Deborah Knipe
Longwood	Cecily Bateman Andrea Mittens Sandra Peters
Basil Read Dwellings	<i>Basil Read administrative team</i>
RMS St Helena	Captain Andrew Greentree
Community Support	Leslie Benjamin Danielle Duncan Dorothy Hercules Elizabeth Idan-Johnson Mandy Thomas <i>Enterprise St Helena</i>

Thank you also to South Atlantic Media Services, Saint FM Community Radio and the Independent newspaper for supporting communications throughout the Census process.



Overview

This report outlines some of the high level results from the Census. There is much more that can, and will, be done to explore the detail within the data which has been collected. There is an extremely high demand for results from the Census and so the decision has been made to publish data and analysis as they become available. There will be many more results to follow and the Statistics team welcome input and requests from users on outputs which will be of use to the community of St Helena. Eventually all Census data will be made available for the general public to use. This will take some time as we have to be sure that no identifying details regarding individual households or people are contained in the data.

The 2016 Census process has seen a number of developments to meet user needs. A few of them are described here; future reports will give more detail.

Legal Basis

The requirements for undertaking a Population Census on St Helena are outlined in the Census Ordinance (1986). The 2016 Population and Housing Census was undertaken according to these specifications and the Attorney General consulted throughout the process to ensure correct interpretation of requirements and that processes strictly adhered to these.

In addition to the Census Ordinance, the Statistics Ordinance (2000) and UN Code of Practice for Official Statistics were relied upon to provide further guidance on the development of Census materials, processing and dissemination of results.

Online Census

For the first time on St Helena an option to complete the Census online was offered. Those who chose to take up this option gave extremely positive feedback regarding all aspects of the user experience. As a new development it is perhaps understandable that the number of people taking up this option was small (7.5% of respondents, 12.9% of households with internet access). Incentives for online completion were given in the form of:

- A 10Mb allowance to cover the ‘cost’ of completing online
- The option to use a dedicated computer in the Statistics Office
- Permission from the Chief Secretary for all members of St Helena Government to complete the Census online during working hours.

None of these were sufficient incentive for the majority of people to overcome reticence towards use of the online platform- an interesting conflict with campaigns to improve use of the internet on St Helena and implement digital solutions for public administration. The online platform will be used again for future Census’ but further investigation is definitely needed to understand barriers to uptake of online solutions.

	Total Number of Responses	Online		Paper	
		Count	Percentage	Count	Percentage
Households	1,845	138	7.5%	1,707	92.5%
Persons	4,349	327	7.5%	4,022	92.5%

Questionnaire Development

An extensive consultation was held- initially targeted towards Elected Members, government administration, key figures within the community, Private Sector bodies and non-Government organisations. This was then extended to cover all members of the public, including through public meetings, media publicity and public invitations to participate which were displayed in prominent locations across the Island. Feedback from the consultation was used along with UN recommendations to develop a questionnaire of internationally harmonised standards but targeted towards local information needs.

The consultation led to an initial draft of the materials to be used in the 2016 Census. This was followed by a thorough piloting process which allowed trialling and further development of the questionnaire to ensure it was accessible, appropriately worded and yielded intended answers. The piloting and feedback was open to all members of the public in addition to a number of individuals and household types who were targeted for invitation to participate- ensuring a broad range of user types and needs were considered.

The final suite of Census materials consisted of:

Form	Purpose
Form A	The main Census questionnaire- delivered to all households. Contained three schedules: Schedule 1: Household Information Schedule 2: Person Information (residents) Schedule 3: Visitor Information The online version of the household questionnaire contained the same questions and schedules but with the structure slightly modified to suit online delivery.
Form B	An optional survey to allow St Helenians overseas on Census night to participate. Also available for online completion.
Form C	For enumeration of communal establishments. Required key information relating to the nature of the establishment and the residents as of Census night. Residents of communal establishments were given the option to provide full person level information through completion of form E1.
Form D	For enumeration of empty dwellings.
Form E1	Person level questions as per Schedule 2 of Form A. To be used for both: i) An extension form for dwellings with more than five usual residents ii) Residents of communal establishments wishing to provide full person level information.
Form E2	A visitor extension form for dwellings with more than five visitors on Census night (<i>was not required by any households</i>)
Guidance Notes	To provide full, detailed instructions on completion of the Census form, the meaning of questions and instructions on how to answer depending on individual circumstances.

All Census questionnaires are available for download from the Statistics page of the Government website: www.sainthelena.gov.sh/statistics



Census Support

It was expected that a number of people would require support to complete the Census questionnaire. Some of the measures taken to provide this were:

- Guidance notes with detailed instructions on completion of the questionnaire
- Training of Census enumerators to provide one-to-one support to persons needing it
- Community support officers were also recruited and trained to provide an additional avenue for support
- A number of radio phone-in sessions were held to discuss completion of the Census questionnaire and provide an opportunity for members of the public to ring in and ask any questions they had
- A dedicated Census hotline, open extended hours including weekends, to allow users to access support
- Community support sessions held in a number of locations across the Island for respondents to attend and receive one-to-one support
- Targeted support for persons requiring it, primarily those anticipated to require exceptional support in order to fully participate in the Census
- Involvement of the Police, Social Workers and Psychiatric Nursing team to advise on appropriate action to enumerate vulnerable or potentially unpredictable individuals

These measures were largely successful in mitigating the risk of noncompliance. Uptake of community support options was disappointingly low which placed an additional burden on Census enumerators. Further consultation will be held on support requirements for future Census exercises, specifically to determine if the forum for community support needs changing or if resources are better diverted towards strengthening of the enumerator team.

Census Delivery

The principal operational period for the 2016 Census was from Saturday 30 January to Sunday 14 February, with Census night itself being Sunday 7 February. This made for an extremely intense fieldwork period for Census enumerators who were required to deliver Census materials to all households within the first week and then arrange for collection, or return, during the second week, post-Census. The purpose of this short time-span was to keep the Census very much at the forefront of respondents minds and prevent loss/misplacing of Census materials. Feedback strongly supports an extended operational period in the future, which will also allow a smaller, but stronger group of enumerators, to take on the bulk of the Census enumeration work.

The administrative districts were broken down into a total of 24 enumeration areas- each with a designated enumerator. Basil Read took responsibility for enumeration of their entire workforce, reducing enumerator burden and overcoming potential language barriers. The Geographic Information Services (GIS) team provided detailed maps of each enumeration area showing key features and the 'footprints' of each building within that area. Each footprint was allocated a unique identifier. Census enumerators used these maps to

identify dwelling locations and deliver Census materials. Where possible the unique identifier was used as the form identifier in anticipation of being able to produce geo-referenced Census information in the future. Clear instructions were given that if a dwelling was not marked the enumerator was to deliver Census materials and flag the omission to the Census supervisors.

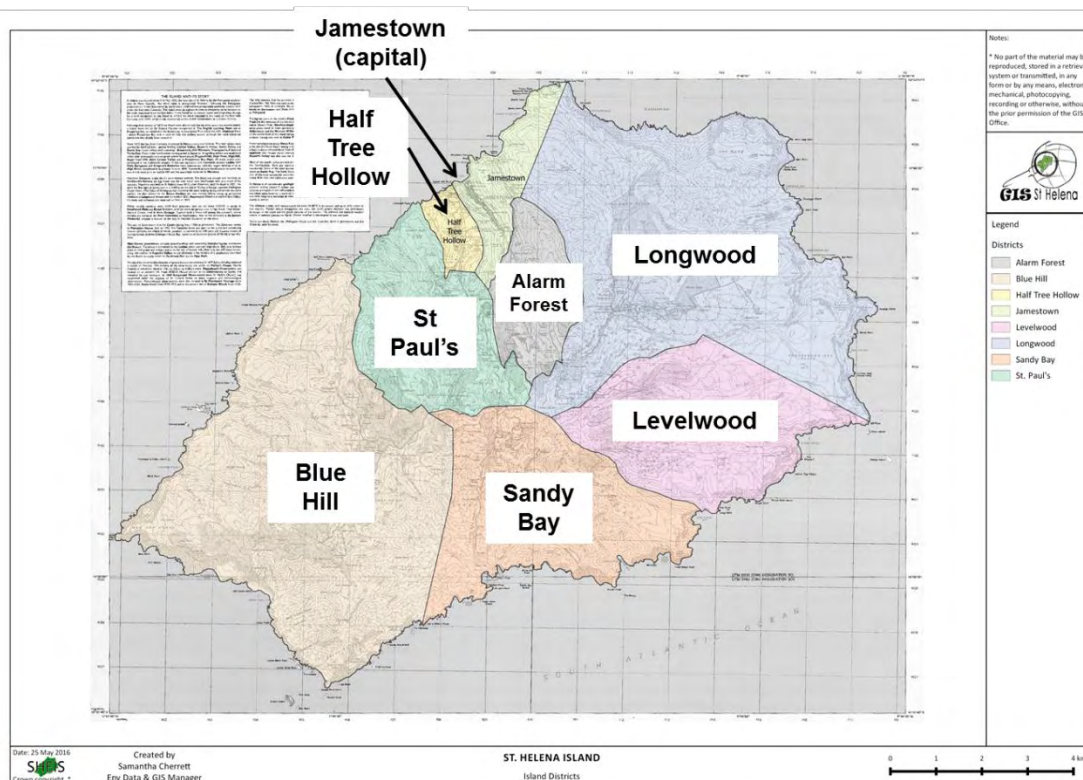


Figure 1: Map showing the administrative districts of St Helena, supplied by Geographic Information Services (GIS) team and South Atlantic Environmental Research Institute (SAERI).

Post Census Enumeration

Upon completion of the initial enumeration fieldwork principal details relating to the households and individuals participating in the Census were collated. This allowed for identification of non-responders and for appropriate follow up to be made. This was completed by 31 March 2016.

Thorough checks of Census returns and anonymised data entry were completed in parallel. Discrepancies and omissions in completed Census details were queried with respondents to ensure accurate capture of key details. Checks were completed on 12 May 2016 with full data entry being completed on 19 May 2016. The efficient and accurate completion of this process is a credit to the core Census team and supports a high-level of assurance in Census Data.

Batch editing, imputation and derived variables

On completion of data entry further quality assurance was conducted on the collated Census data. Any outstanding anomalies in the data were identified and appropriate action taken to resolve. The results outlined in this report



refer to this initial data. Imputation of secondary fields and production of derived variables is ongoing and will be included in future reports.

Initial data entry was completed in a CSPro Database with results exported to Excel for ease of handling and analysis.

Key variables for which information was required from all respondents were:

Household: Tenure, number of usual residents present on Census night, number of bedrooms, kitchen, bathroom and toilet facilities, sewer system, water supply, access to hot water, main power for lighting, primary cooking fuel

Person: gender, date of birth, marital status, place of birth, immigration status and economic activity last week.

In cases where this key information was not initially provided follow up calls were made to obtain omitted answers. Where possible auxiliary statistical sources were also used to verify/ complete missing fields.

It is intended that any further missing answers will be statistically imputed to provide a 'complete' final dataset. This stage of processing has not yet been completed and users will find that this summary report contains tabulations including the category 'Not Stated'.

Next Steps and Further Analysis

There is much more that can, and will, be done to further explore the 2016 Census data. Short, topic specific reports will be published as the analysis becomes available. Relevant information will also be made available in electronic format (spreadsheet) to allow users to further explore the data and perform analysis to suit their individual needs. Updates will be publicised through local media. Interested users are encouraged to visit the statistics page on the SHG website (www.sainthelena.gov.sh/statistics) to check for further updates.

In case of queries or questions for specific updates users can contact any member of the Statistics Office team who will be happy to assist in any way they can.

Census results

Population Count

	Total	St Helenian	Other Nationalities
On-Island Resident (de jure) population 7 February 2016	4,534	4,122	412
Resident Household Population	4,349	4,037	312
Resident Communal Establishments	185	85	100
Enumerated (de facto) population 7 February 2016	4,802	4,245	557
Enumerated = Resident population plus:	268	123	145
Visitors in Households	67	42	25
Visitors in Communal Establishments	5	0	5
Yachts in Harbour	13	0	13
Persons on-board the RMS St Helena <i>(sailed from St Helena 7 February)</i>	183	81	102
Of which: Crew	56	32	24
Passengers	127	49	78

Population of Ascension and Tristan da Cunha

	Total	St Helenian	Other Nationalities
Ascension Island March 2016	806	556	250
Tristan da Cunha March 2016	293	271	22
		<i>(Tristanian)</i>	

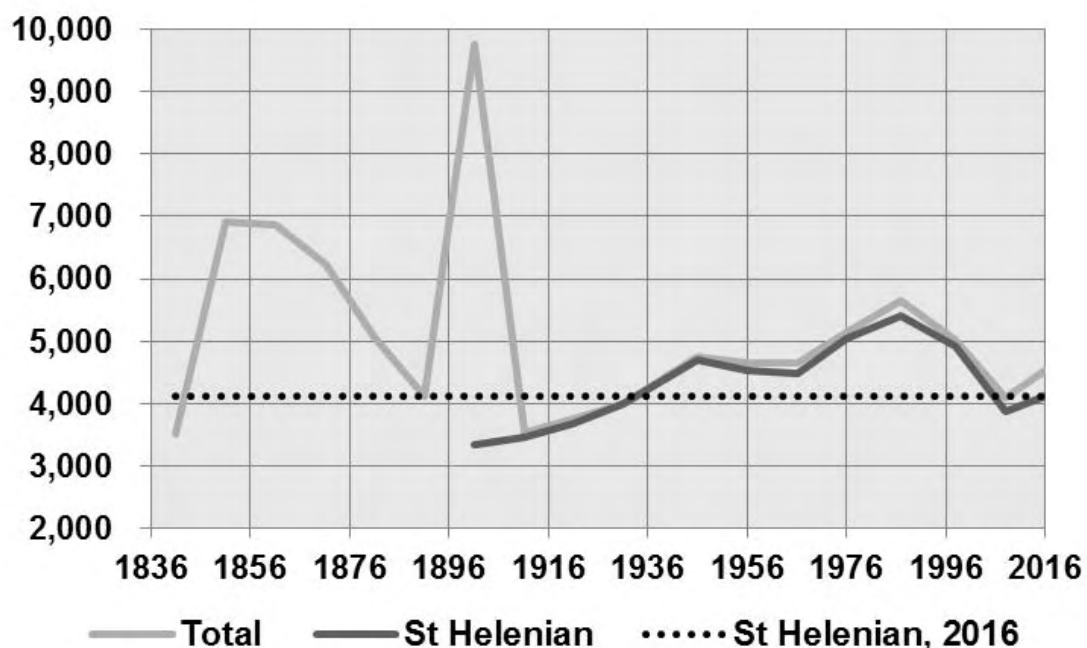


Figure 2: St Helena resident population, 1841 to 2016.



Population of St Helena, 1901 to 2016

	St Helenian Resident Population			Total Resident Population		
	Male	Female	Total	Male	Female	Total
7th April 1901	1,534	1,808	3,342	7,932	1,844	9,776
9th April 1911	1,581	1,862	3,443	1,658	1,862	3,520
24th April 1921	1,705	1,961	3,666	1,756	1,991	3,747
26th April 1931	1,904	2,091	3,995	1,904	2,091	3,995
27th October 1946	2,154	2,546	4,700	2,181	2,567	4,748
21st October 1956	2,170	2,365	4,535	2,224	2,418	4,642
24th July 1966	2,150	2,320	4,470	2,233	2,416	4,649
31st October 1976	2,449	2,577	5,026	2,514	2,633	5,147
22nd February 1987	2,625	2,790	5,415	2,769	2,875	5,644
8th March 1998	2,474	2,442	4,916	2,527	2,481	5,008
10th February 2008	1,948	1,919	3,867	2,051	2,026	4,077
7th February 2016	2,114	2,008	4,122	2,396	2,138	4,534

Household Population and dwellings by administrative district, 2016

Administrative District	Number of People	Number of occupied dwellings	Average (mean) household size
Jamestown	629	282	2.2
Half Tree Hollow	984	409	2.4
St Paul's	843	363	2.3
Blue Hill	158	73	2.2
Sandy Bay	193	82	2.4
Levelwood	369	154	2.4
Longwood	790	319	2.5
Alarm Forest	383	163	2.3
Total	4,349	1,845	2.4

St Helenian Household Population and dwellings by administrative district

District	Number of St Helenians	Number of St Helenian households	Average (mean) household size
Jamestown	566	247	2.3
Half Tree Hollow	937	383	2.4
St Paul's	759	325	2.3
Blue Hill	154	70	2.2
Sandy Bay	193	82	2.4
Levelwood	358	149	2.4
Longwood	733	300	2.4
Alarm Forest	337	142	2.4
Total	4,037	1,698	2.4

Age of the St Helenian Household Population

In 2016 the median age on St Helena stands at 47.1, up from 44 in 2008 and 33 in 1998. The overall age dependency ratio (the ratio of those above/ below working age to those of working age) stands at 56 with the aged dependency ratio (population above age of retirement to those of working age) standing at 35, up from 26 in 2008, placing St Helena amongst the very highest of aged dependency in the world.

Age Dependency Ratio for the St Helenian Resident Population (1987 to 2016)

Census Year	Overall Age Dependency Ratio	Of which:	
		Child Dependency	Aged Dependency
1987	57	44	14
1998	49	32	17
2008	48	22	26
2016	56	21	35

The average age, and age dependency varies between administrative districts, the 'youngest' household population being Half Tree Hollow and the oldest in Blue Hill and Sandy Bay. The highest aged dependency is found in Jamestown and the lowest in Half Tree Hollow.

Median Age and Age Dependency of the *St Helenian Household Resident Population*

District	Median Age	Overall Age Dependency Ratio	Aged Dependency Ratio (Retirees)
Jamestown	48.6	68	45
Half Tree Hollow	44.7	46	25
St Paul's	47.4	59	37
Blue Hill	51.8	43	31
Sandy Bay	51.8	52	35
Levelwood	48.8	53	36
Longwood	46.3	57	33
Alarm Forest	45.6	56	33
Total	47.1	55	34

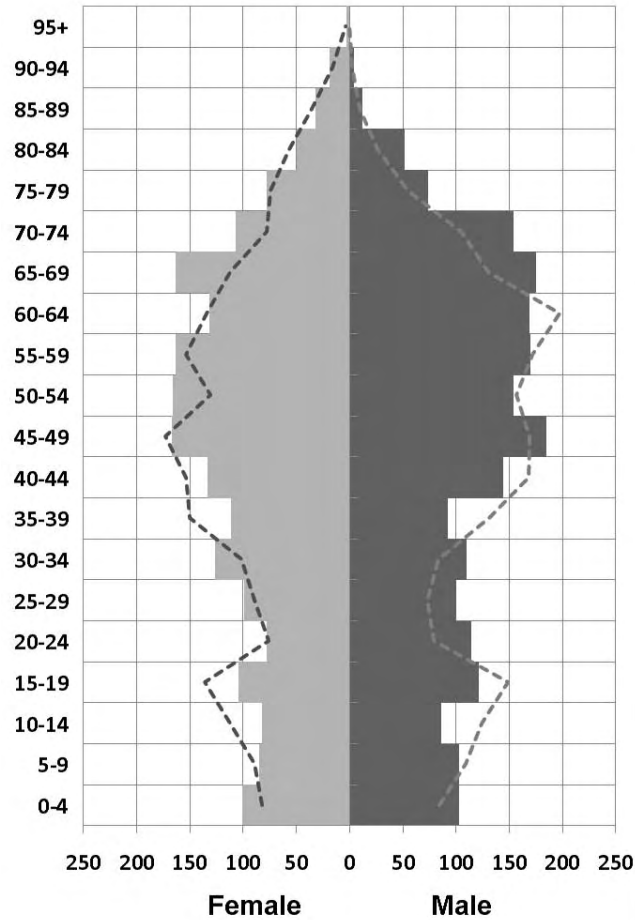


Figure 3: Five- year band age-sex distribution of the St Helenian population (households and communal establishments). Bars = 2016, dashed line = 2008

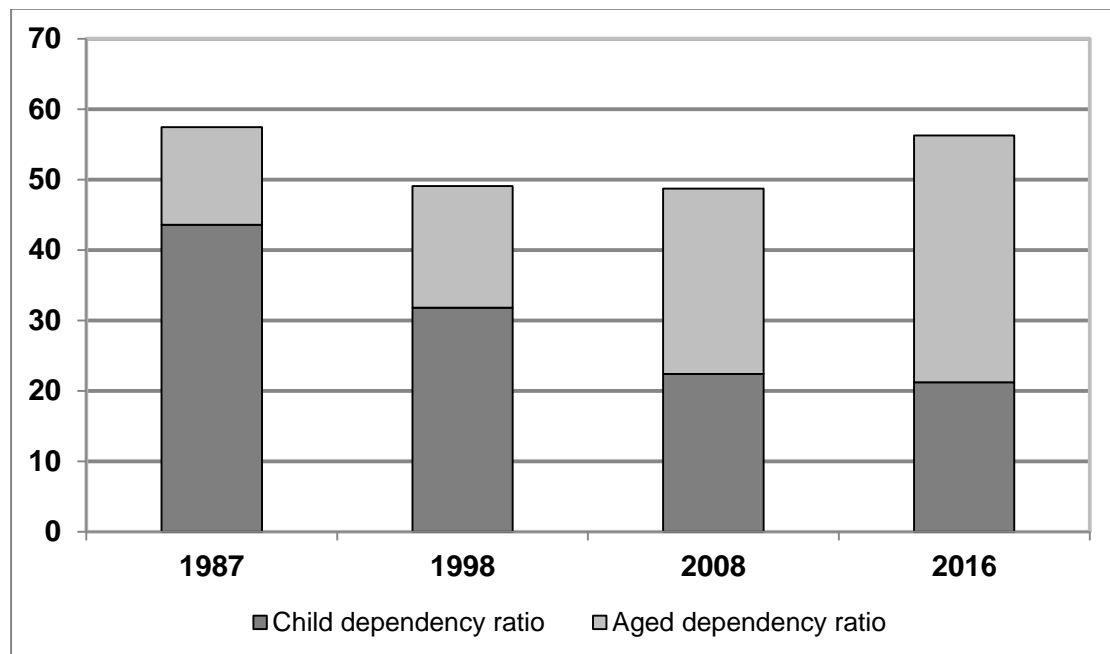


Figure 4: Age dependency ratio for the St Helenian resident population (household and communal establishments).

Economic Activity

Economic Activity of the Resident Household Population

	Count	Percentage
Population above compulsory school age	3,662	84%
<i>Economically Active</i>	2,756	63%
<i>Economically Inactive</i>	906	21%
Children below compulsory school age	687	16%
Total Population	4,349	

Economic Activity of the St Helenian Household Population

	Count	Percentage
Population above compulsory school age	3,407	84%
Economically Active	2,539	63%
16 - 64 years old	2,311	91%
65+ years old	228	9%
Economically Inactive	868	22%
Children of compulsory school age	630	16%
Total Population	4,037	

Nature of Economic Activity of the St Helenian Household Population

	Male	Female	Total
Economically Active	1,376	1,163	2,539
Employed full-time	968	880	1,848
Employed part-time	106	129	235
Self-employed	217	89	306
Apprentice	18	11	29
Other	5	2	7
Unemployed & looking for work *SEE BELOW	48	28	76
Aged 65 and over	3	1	4
Job Accepted- waiting to start	5	5	10
Temporarily away from work	9	19	28
Economically Inactive	372	496	868
Looking after home/family	8	136	144
Student	6	3	9
Retired	323	301	624
Disabled and unable to work	35	56	91
Children	333	297	630
Total Population	2,089	1,948	4,037



**No tick-box option to be 'Unemployed and NOT looking for work', may have led to an inflation of this figure. 10 registered unemployed at the time of the Census.*

Unemployment on St Helena

In the first week of February 2016, the week prior to the Census, 76 St Helenians stated they were 'Unemployed and looking for work'. There is a substantial discrepancy with official estimates of unemployment, which are monitored on a monthly basis. In February 2016 10 people were registered as unemployed and in receipt of unemployment allowance- the most frequently updated measure of unemployed on St Helena and so the official measure of unemployment on St Helena. The careers centre, run by Enterprise St Helena (ESH), was visited by two people in both the month preceding and the month following the Census.

The unemployment figures discussed here relate to people that have stated that they are economically active- at the time of the Census they were seeking, and available to start, paid employment.

Location of Last Employment	Total	Age		
		Under 20	20 to 59	60+
On-Island	34	6	25	3
Off-Island	20	0	17	3
Not Stated	23	6	15	2
Total	76	11	57	8

Nature of Last Job	Count
Construction/ Labour	18
Not Stated	14
Catering/Hospitality	7
Shop Assistant	7
Mechanic	5
Agriculture/ Fishing	3
Child Care	3
Office assistant	3
Other (15 per categories, including occupational therapy)	16
Total	76

It is clear that there is a need to further explore unemployment, particularly longevity of unemployment and barriers to recruitment. It is noted that in January 2016 29 posts were advertised in local media, two posts being re-advertised having failed to recruit previously. In February a further 31 local posts were advertised, one being re-advertised having failed to recruit previously.

Self-reported Health Status and Caring Commitments of the St Helenian Household Population

General state of health	Count	Percentage
Very good	1,167	28.9%
Good	1,973	48.9%
Fair	803	19.9%
Bad	83	2.1%
Very bad	10	0.2%
Not Stated	1	0.0%
Total	4,037	

Limitation due to disability or long-term ill-health	Count	Percentage
Limited a lot	156	3.9%
Limited a little	419	10.4%
Not limited	3,441	85.2%
Not Stated	21	0.5%
Total	4,037	

Access Issues

Able to enter/ exit home without assistance	Count	Percentage
Yes	3,913	96.9%
No	114	2.8%
Not Stated	10	0.2%
Total	4,037	

Caring Commitments for family/ friends (excluding paid work and child-care)	Count	Percentage
Yes	335	8.3%
No	3,669	90.9%
Not Stated	33	0.8%
Total	4,037	

Hours Spent on Care	Count	Percentage
1-9 hours	197	58.8%
10-19 hours	37	11.0%
20-49 hours	34	10.1%
50+ hours	47	14.0%
Not Stated	20	6.0%
Total	335	

Other Person Level Information

Marital Status	Resident Population		St Helenian Resident	
	Count	Percentage	Count	Percentage
Single	1,788	41.1%	1,664	41.2%
Married or civil partnership	1,545	35.5%	1,419	35.1%
Co-habiting	583	13.4%	544	13.5%
Separated	30	0.7%	28	0.7%
Divorced	132	3.0%	113	2.8%
Widowed	271	6.2%	269	6.7%
Total	4,349		4,037	

Religion	Resident Population		St Helenian Resident	
	Count	Percentage	Count	Percentage
Yes	3,676	84.5%	3,504	86.8%
No	266	6.1%	188	4.7%
Prefer not to say	407	9.4%	345	8.5%
Total	4,349		4,037	

Denomination	Resident Population		St Helenian Resident	
	Count	Percentage	Count	Percentage
Anglican	2,995	81.5%	2,937	83.8%
Jehovah's Witness	178	4.8%	172	4.9%
Baptist	93	2.5%	88	2.5%
Roman Catholic	53	1.4%	18	0.5%
New Apostolic	61	1.7%	58	1.7%
Seventh Day Adventist	77	2.1%	74	2.1%
Salvation Army	75	2.0%	75	2.1%
Baha'i	11	0.3%	11	0.3%
Other	97	2.6%	39	1.1%
Not Stated	36	1.0%	32	0.9%
Total	3,676		3,504	

Ever Left St Helena	Count	Percentage
Yes	3,267	80.9%
No	667	16.5%
Not Stated	103	2.5%
Total	4,037	

Ever Worked Overseas	Count	Percentage	
No	1,826	45.2%	
Yes	2,051	50.8%	
	<i>Less than 5 years</i>	836	20.7%
	<i>Over 5 years</i>	1,215	30.1%
Not Stated	160	4.0%	
Total	4,037		

Dwelling Type and Tenure

<i>Dwelling Type</i>	Count	Percentage
Detached house	1,475	79.9%
Semi-detached	275	14.9%
Flat	95	5.1%
Total	1,845	

<i>Tenure</i>	Count	Percentage
Owner-occupied	1,334	72.2%
Rented: Tied to job	65	3.5%
Rented: Untied to job	355	19.2%
Rent free	91	4.9%
Total	1,845	

Nature of Tenure

			Count	Percentage of tenure	Percentage of all dwellings
Owned	1,334	Owned outright	1,166	87.4%	63.2%
		Being Bought on Loan	168	12.6%	9.1%
Rented/ Rent Free	511	Government	218	42.7%	11.8%
		Non-Government Employer	13	2.5%	0.7%
		Private Sector Landlord	280	54.8%	15.2%
		<i>Of which: St Helenian</i>	169	33.1%	9.2%
		<i>Non-St Helenian</i>	111	21.7%	6.0%
Total	1,845				



Funding of Home Ownership

	Count	Percentage
Through savings from overseas employment	302	25.9%
Inherited	301	25.8%
Through savings from local employment	208	17.8%
Loan from Bank of St Helena	201	17.2%
SHG Home Purchase Scheme	58	5.0%
Employment and Loan	30	2.6%
<i>Overseas Employment</i>	<i>14</i>	<i>1.2%</i>
<i>Local Employment</i>	<i>11</i>	<i>0.9%</i>
<i>Overseas and Local Employment</i>	<i>5</i>	<i>0.4%</i>
Combination of Local and Overseas Employment	8	0.7%
Inherited plus employment	4	0.3%
<i>Overseas Employment</i>	<i>3</i>	<i>0.3%</i>
<i>Local Employment</i>	<i>1</i>	<i>0.1%</i>
Other	23	2.0%
Not Stated	31	2.7%
Total	1,166	

Kitchen and Bathroom Facilities

<i>Kitchen Facilities</i>	Count	Percentage
Separate cooking area (inside)	973	52.7%
Combined cooking and dining area (inside)	853	46.2%
Outside cooking area (only)	7	0.4%
Other	3	0.2%
No designated cooking area	9	0.5%
Total	1,845	

<i>Kitchen Sink</i>	Count	Percentage
Yes	1,833	99.3%
No	12	0.7%
Total	1,845	

<i>Bathroom Type</i>	Count	Percentage
Fixed bath/shower (inside)	1,792	97.1%
Fixed bath/shower (outside, exclusive)	39	2.1%
Fixed bath/shower (outside, shared)	10	0.5%
No fixed bath/shower	4	0.2%
<i>Of which : Fixed Wash Basin</i>	2	0.1%
<i>No Fixed Wash Basin</i>	2	0.1%
Total	1,845	

<i>Toilet Facilities</i>		Count	Percentage	
Inside	97.1%	Flush toilet (inside)	1,793	97.2%
		Other (inside)	0	0.0%
Outside (Private)	2.8%	Flush toilet (outside, exclusive)	48	2.6%
		Other (outside, exclusive)	4	0.2%
Other	0%	Flush toilet (outside, shared)	0	0.0%
		Other (outside, shared)	0	0.0%
		None	0	0.0%
Total		1,845		



Water and Sewerage

Sewer System	Count	Percentage
Public system	961	52.1%
Private or individual system	880	47.7%
Other	0	0.0%
None	4	0.2%
Total	1,845	

Main Water Supply		Count	Percentage
<i>Treated</i> 86.6%	Supplied by Connect Saint Helena	1,599	86.6%
<i>Untreated</i> 13.4%	<i>Of which:</i>		
	Connect Saint Helena - piped inside	176	9.5%
	Connect Saint Helena – piped to outside tank/ standpipe	34	1.8%
	Rainwater tank	2	0.1%
	Spring or stream	34	1.8%
	Other	0	0.0%
Total		1,845	

Piped Hot Water	Count	Percentage
Yes	1,212	65.6%
No	633	34.3%
Total	1,845	

Solar Hot Water Heater	Count	Percentage
Yes	733	39.7%
No	1,112	60.2%
Total	1,845	

Roofing Material	Count	Percentage
Metal Sheetting	1,087	58.9%
Asbestos	499	27.0%
Combination -Metal and Asbestos	169	9.2%
Slate/ tile	15	0.8%
Other	9	0.5%
Don't know	66	3.6%
Total	1,845	

Power

<i>Main Power for lighting</i>	Count	Percentage
Electric mains	1,824	98.9%
Other	21	1.1%
<i>Of which: Candles</i>	13	0.7%
<i>Mobile/ Calor Gas</i>	4	0.2%
<i>Battery Lights/ Lantern</i>	3	0.2%
<i>Generator</i>	1	0.1%
Total	1,845	

<i>Primary Cooking Fuel</i>	Count	Percentage
Electricity	1,181	64.0%
Mobil/Calor gas	257	13.9%
Paraffin/Kerosene	4	0.2%
Wood	395	21.4%
Other	8	0.4%
Total	1,845	

<i>Secondary Cooking Fuel</i>	Count	Percentage
Electricity	324	17.6%
Mobil/Calor gas	232	12.6%
Paraffin/Kerosene	8	0.4%
Wood	165	8.9%
None	1,010	54.7%
Other	17	0.9%
Not Stated	89	4.8%
Total	1,845	

<i>On-site generation of Renewable Power</i>	Count	Percentage
Wind turbines	0	0.0%
Solar/PV cells	2	0.1%
Other	0	0.0%
None	1,843	99.8%
Total	1,845	

Household Assets

The Households Assets figures refer to the holding, or not, of material goods by a household. The number or quantity of each asset held by a household was not asked for, just whether the household owned, rented or had main use of any of the listed assets.

Household Goods	With		Without	
	Count	%	Count	%
Fridge and Freezer	1,708	93%	137	7%
Fridge	1,782	97%	63	3%
Freezer	1,728	94%	117	6%
Washing machine	1,624	88%	221	12%
Dishwasher	114	6%	1731	94%
Communications	With		Without	
	Count	%	Count	%
Telephone (landline)	1,722	93%	123	7%
Radio	1,629	88%	216	12%
Television subscription	1,066	58%	779	42%
Television screen	1,604	87%	241	13%
Video/DVD equipment	1,420	77%	425	23%
Personal computer/laptop/tablet	1,189	64%	656	36%
Internet access	1,068	58%	777	42%
Games console	378	20%	1467	80%
Mobile phone	714	39%	1131	61%
Smoke alarm	186	10%	1659	90%
Fire extinguisher	152	8%	1693	92%
Transport	With		Without	
	Count	%	Count	%
Motor Vehicle (Car, Landrover, or similar)	1,368	74%	450	26%
<i>Cars</i>	1,167	63%	678	37%
<i>Landrovers, vans and pickups</i>	484	26%	1,361	74%
Motor cycles and scooters	169	9%	1,676	91%
Other motor vehicles	67	4%	1,778	96%
Boats with motors	59	3%	1,786	97%
Other boats	5	0%	1,840	100%

Provisional Count of Empty Dwellings

In addition to the count of occupied dwellings, the 2016 Census operations included the identification and recording of unoccupied dwellings. These were identified by:

- Asking respondents to the household Census if they were responsible for any dwellings which were not occupied on Census night, and if so requiring them to complete Form D- questionnaire for empty dwellings.
- Requiring Census enumerators to take note of any empty dwellings within their enumeration area and, if unable to contact the person responsible for the property, complete an empty dwelling questionnaire to the best of their knowledge.

The information was to be completed for dwellings which were empty on Census night- regardless if it was temporarily empty or had been empty for an extended period of time. Initial quality assurance has been completed to remove any duplicate responses. Further investigation is required to verify that all unoccupied dwelling structures were identified- particularly those in a derelict/ ruined state situated away from inhabited dwelling areas.

In total 579 dwellings were identified which were empty on Census night. Of these 284 were habitable- being of a good state of repair with all basic amenities and suitable for immediate occupation. Of the habitable empty dwellings, 154 had been lived in within the last year.

State of Repair of Empty Dwelling	Count	Percentage
Under Construction	114	20%
Habitable	284	49%
Requires Upgrading/ improvement	82	14%
Uninhabitable	34	6%
Structurally unsound/ abandoned	9	2%
Not Stated <i>(unable to contact person responsible for property)</i>	56	10%
Total	579	

Last Occupied	Total	State of Repair	
		Habitable	Other
Within the last three months	62	54	8
Within the last year	113	100	13
Within the last 2-3 years	47	29	18
4-5 years ago	19	11	8
5-10 years ago	27	13	14
10+ years ago	47	6	41
Never	2	0	2
Not Applicable (under construction)	100	0	100
Not Stated <i>(unable to contact person responsible for property)</i>	162	71	91
Total	579	284	295





This summary report is the official overview of the 2016 Population and Housing Census of St Helena Island. Information from the Census informs development of public policy and planning of service provision in both the public and private sector. The results from the census will form the basis for key decisions and strategic planning throughout a critical period of the Island's development.

The report outlines the key aspects of the Census operations, including the consultation and planning stages, field activities and data capture. It is aimed at all users of Census data and it is hoped that everyone from policy makers, government administration, key figures in the private sector and the wider public will find it useful and informative.



**St Helena
Government**

www.sainthelana.gov.sh



www.sainthelana.gov.sh/statistics